

(w.e.f. 1st June)

building healthy, sustainable environments



wavin

about Wavin

Wavin is an innovative solution provider for the building and infrastructure industry across multiple continents. Backed up by 60+ years of expertise, we are geared up to tackle some of the world's biggest challenges around: water supply, sanitation, climate-resilient cities and building performance.

At Wavin, we focus on creating a positive change in the world. Our passion is to build liveable and loveable places. We engage and collaborate with city leaders, engineers, planners and installers to help make cities future-proof, and their buildings comfortable and energy-efficient.

Wavin is part of Orbia, a community of companies bound together by a shared purpose: to advance life around the world. Wavin has 12,000+ employees in 40+ countries worldwide.

For more information about Wavin, visit us @ www.wavin.com
or for Wavin India, visit us @ www.wavin.co.in

let's build long-lasting cities



Welcome to the world of innovative solutions for a sustainable tomorrow



Drinking Water
Solutions
(Hot & Cold)



Sewer Solutions



Soil & Waste
Solutions



Indoor Climate
Solutions (Surface
heating and cooling)



Rainwater &
Stormwater Solutions



Water and Gas
distribution Solutions

Wavin CPVC

Wavin CPVC plumbing system is a safe, economical, and easy to install a system designed for all hot & cold water applications. It has a proven hot & cold water performance from 0°C to 93°C.

Wavin CPVC pipes and fittings are designed to improve the experience of our end-customers and users with efficient, complete, and safe installations.

Wavin lead-free CPVC pipes and fittings are used in a wide range of applications includes Hot and Cold water in homes, apartments, hotels, resorts, hospitals, etc; for safe and hygienic water supply. It is suitable for all uptake and down lines, terraces including concealed pipework applications.

It is deemed safe for the transport and use of potable water meant for drinking, cooking, and bathing.

Key Features & Highlights:



Made of food-grade material



RoHS
RoHS Compliant
(Heavy-metals free)



Leak-proof joints

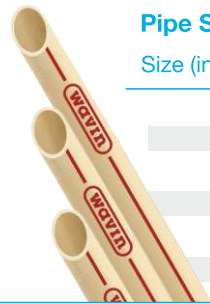


No Corrosion or Scaling



CPVC Pipes & Fittings

Wavin CPVC pipes SDR 11 and SDR 13.5 are as per IS 15778 standards & CPVC fittings are as per ASTM D2846 standards.



Pipe SDR 11, 3 mtr.

| Size (inch) | Size (mm) | SAP Code | Std. Pkg. (Nos.) | MRP (per length) |
|-------------|-----------|----------|------------------|------------------|
| ½ | 15 | 3087420 | 50 | 218 |
| ¾ | 20 | 3087429 | 50 | 320 |
| 1 | 25 | 3087433 | 30 | 486 |
| 1¼ | 32 | 3087439 | 25 | 824 |
| 1½ | 40 | 3087441 | 20 | 1130 |
| 2 | 50 | 3087450 | 10 | 1884 |



Pipe SDR 11, 5 mtr.

| Size (inch) | Size (mm) | SAP Code | Std. Pkg. (Nos.) | MRP (per length) |
|-------------|-----------|----------|------------------|------------------|
| ½ | 15 | 3087665 | 50 | 362 |
| ¾ | 20 | 3087666 | 50 | 534 |
| 1 | 25 | 3087667 | 30 | 810 |
| 1¼ | 32 | 3087668 | 25 | 1374 |
| 1½ | 40 | 3087619 | 20 | 1884 |
| 2 | 50 | 3087620 | 10 | 3138 |



Pipe SDR 13.5, 3 mtr.

| Size (inch) | Size (mm) | SAP Code | Std. Pkg. (Nos.) | MRP (per length) |
|-------------|-----------|----------|------------------|------------------|
| ½ | 15 | 3087468 | 50 | 192 |
| ¾ | 20 | 3087618 | 50 | 300 |
| 1 | 25 | 3087630 | 30 | 444 |
| 1¼ | 32 | 3087641 | 25 | 700 |
| 1½ | 40 | 3087652 | 20 | 968 |
| 2 | 50 | 3087663 | 10 | 1594 |



Pipe SDR 13.5, 5 mtr.

| Size (inch) | Size (mm) | SAP Code | Std. Pkg. (Nos.) | MRP (per length) |
|-------------|-----------|----------|------------------|------------------|
| ½ | 15 | 3087622 | 50 | 318 |
| ¾ | 20 | 3087623 | 50 | 500 |
| 1 | 25 | 3087624 | 30 | 740 |
| 1¼ | 32 | 3087625 | 25 | 1168 |
| 1½ | 40 | 3087626 | 20 | 1614 |
| 2 | 50 | 3087627 | 10 | 2658 |



Coupler - SOC

| Size (inch) | Size (mm) | SAP Code | Std. Pkg. (Nos.) | MRP (per piece) |
|-------------|-----------|----------|------------------|-----------------|
| ½ | 15 | 3087628 | 150 | 12 |
| ¾ | 20 | 3087629 | 50 | 14 |
| 1 | 25 | 3087631 | 40 | 24 |
| 1¼ | 32 | 3087632 | 20 | 48 |
| 1½ | 40 | 3087633 | 10 | 86 |
| 2 | 50 | 3087634 | 6 | 180 |



Reducer Coupler - SOC

| Size (inch) | Size (mm) | SAP Code | Std. Pkg. (Nos.) | MRP (per piece) |
|-------------|-----------|----------|------------------|-----------------|
| ¾ X ½ | 20 X 15 | 3087635 | 80 | 20 |
| 1 X ½ | 25 X 15 | 3087636 | 40 | 30 |
| 1 X ¾ | 25 X 20 | 3087637 | 40 | 32 |
| 1¼ X ½ | 32 X 15 | 3087638 | 15 | 62 |
| 1¼ X ¾ | 32 X 20 | 3087639 | 15 | 68 |
| 1¼ X 1 | 32 X 25 | 3087640 | 15 | 68 |
| 1½ X ½ | 40 X 15 | 3087642 | 10 | 96 |
| 1½ X ¾ | 40 X 20 | 3087643 | 10 | 98 |
| 1½ X 1 | 40 X 25 | 3087644 | 10 | 100 |
| 1½ X 1¼ | 40 X 32 | 3087645 | 10 | 106 |
| 2 X ½ | 50 X 15 | 3087646 | 6 | 198 |
| 2 X ¾ | 50 X 20 | 3087647 | 6 | 208 |
| 2 X 1 | 50 X 25 | 3087648 | 6 | 218 |
| 2 X 1¼ | 50 X 32 | 3087649 | 6 | 228 |
| 2 X 1½ | 50 X 40 | 3087650 | 6 | 244 |



Elbow 45° - SOC

| Size (inch) | Size (mm) | SAP Code | Std. Pkg. (Nos.) | MRP (per piece) |
|-------------|-----------|----------|------------------|-----------------|
| ½ | 15 | 3087750 | 100 | 18 |
| ¾ | 20 | 3087761 | 50 | 26 |
| 1 | 25 | 3087763 | 25 | 44 |
| 1¼ | 32 | * | * | * |
| 1½ | 40 | * | * | * |
| 2 | 50 | * | * | * |



Elbow 90° - SOC

| Size (inch) | Size (mm) | SAP Code | Std. Pkg. (Nos.) | MRP (per piece) |
|-------------|-----------|----------|------------------|-----------------|
| ½ | 15 | 3087658 | 100 | 16 |
| ¾ | 20 | 3087659 | 40 | 16 |
| 1 | 25 | 3087660 | 25 | 34 |
| 1¼ | 32 | 3087661 | 10 | 76 |
| 1½ | 40 | 3087662 | 8 | 148 |
| 2 | 50 | 3087664 | 4 | 296 |



Reducer Elbow 90° - SOC

| Size (inch) | Size (mm) | SAP Code | Std. Pkg. (Nos.) | MRP (per piece) |
|-------------|-----------|----------|------------------|-----------------|
| ¾ X ½ | 20 X 15 | 3087717 | 50 | 26 |
| 1 X ½ | 25 X 15 | 3087728 | 40 | 46 |
| 1 X ¾ | 25 X 20 | 3087739 | 30 | 64 |
| 1¼ X ¾ | 32 X 20 | * | * | * |
| 1¼ X 1 | 32 X 25 | * | * | * |



| Tee 90° - SOC | | | Std. Pkg. | MRP |
|---------------|-----------|----------|-----------|-------------|
| Size (inch) | Size (mm) | SAP Code | (Nos.) | (per piece) |
| 1/2 | 15 | 3087764 | 60 | 20 |
| 3/4 | 20 | 3087765 | 30 | 28 |
| 1 | 25 | 3087766 | 15 | 44 |
| 1 1/4 | 32 | 3087718 | 8 | 98 |
| 1 1/2 | 40 | 3087719 | 5 | 174 |
| 2 | 50 | 3087720 | 3 | 374 |



| Union - SOC | | | Std. Pkg. | MRP |
|-------------|-----------|----------|-----------|-------------|
| Size (inch) | Size (mm) | SAP Code | (Nos.) | (per piece) |
| 1/2 | 15 | 3087694 | 50 | 50 |
| 3/4 | 20 | 3087695 | 15 | 80 |
| 1 | 25 | 3087696 | 14 | 102 |
| 1 1/4 | 32 | 3087697 | 8 | 160 |
| 1 1/2 | 40 | 3087698 | 6 | 264 |
| 2 | 50 | 3087699 | 4 | 474 |



| Reducer Tee - SOC | | | Std. Pkg. | MRP |
|-----------------------|--------------|----------|-----------|-------------|
| Size (inch) | Size (mm) | SAP Code | (Nos.) | (per piece) |
| 3/4 X 1/2 X 3/4 | 20 X 15 X 20 | * | * | * |
| 3/4 X 3/4 X 1/2 | 20 X 20 X 15 | 3087721 | 30 | 46 |
| 1 X 1 X 1/2 | 25 X 25 X 15 | 3087722 | 15 | 70 |
| 1 X 1 X 3/4 | 25 X 25 X 20 | 3087723 | 15 | 78 |
| 1 1/4 X 1 1/4 X 1/2 | 32 X 32 X 15 | 3087724 | 8 | 126 |
| 1 1/4 X 1 1/4 X 3/4 | 32 X 32 X 20 | 3087725 | 8 | 148 |
| 1 1/4 X 1 1/4 X 1 | 32 X 32 X 25 | 3087726 | 8 | 148 |
| 1 1/2 X 1 1/2 X 1/2 | 40 X 40 X 15 | 3087727 | 5 | 210 |
| 1 1/2 X 1 1/2 X 3/4 | 40 X 40 X 20 | 3087729 | 5 | 210 |
| 1 1/2 X 1 1/2 X 1 | 40 X 40 X 25 | 3087730 | 5 | 196 |
| 1 1/2 X 1 1/2 X 1 1/4 | 40 X 40 X 32 | 3087731 | 5 | 194 |
| 2 X 2 X 1/2 | 50 X 50 X 15 | 3087732 | 3 | 372 |
| 2 X 2 X 3/4 | 50 X 50 X 20 | 3087733 | 3 | 402 |
| 2 X 2 X 1 | 50 X 50 X 25 | 3087734 | 3 | 402 |
| 2 X 2 X 1 1/4 | 50 X 50 X 32 | 3087735 | 3 | 402 |
| 2 X 2 X 1 1/2 | 50 X 50 X 40 | 3087736 | 3 | 402 |



| Tank Adaptor (THD X THD) | | | Std. Pkg. | MRP |
|--------------------------|-----------|----------|-----------|-------------|
| Size (inch) | Size (mm) | SAP Code | (Nos.) | (per piece) |
| 1/2 | 15 | 3087700 | 25 | 56 |
| 3/4 | 20 | 3087701 | 20 | 58 |
| 1 | 25 | 3087703 | 10 | 88 |
| 1 1/4 | 32 | 3087704 | 8 | 140 |
| 1 1/2 | 40 | 3087705 | 6 | 204 |
| 2 | 50 | 3087706 | 4 | 318 |



| Reducer Bushing - SOC | | | Std. Pkg. | MRP |
|-----------------------|-----------|----------|-----------|-------------|
| Size (inch) | Size (mm) | SAP Code | (Nos.) | (per piece) |
| 3/4 X 1/2 | 20 X 15 | 3087737 | 150 | 12 |
| 1 X 1/2 | 25 X 15 | 3087738 | 65 | 24 |
| 1 X 3/4 | 25 X 20 | 3087740 | 65 | 24 |
| 1 1/4 X 1/2 | 32 X 15 | 3087741 | 40 | 34 |
| 1 1/4 X 3/4 | 32 X 20 | 3087742 | 40 | 34 |
| 1 1/4 X 1 | 32 X 25 | 3087743 | 40 | 34 |
| 1 1/2 X 1/2 | 40 X 15 | 3087744 | 20 | 56 |
| 1 1/2 X 3/4 | 40 X 20 | 3087745 | 20 | 56 |
| 1 1/2 X 1 | 40 X 25 | 3087746 | 20 | 56 |
| 1 1/2 X 1 1/4 | 40 X 32 | 3087747 | 20 | 36 |
| 2 X 1/2 | 50 X 15 | 3087748 | 10 | 114 |
| 2 X 3/4 | 50 X 20 | 3087749 | 10 | 114 |
| 2 X 1 | 50 X 25 | 3087751 | 10 | 114 |
| 2 X 1 1/4 | 50 X 32 | 3087752 | 10 | 114 |
| 2 X 1 1/2 | 50 X 40 | 3087753 | 10 | 92 |



| Male Adaptor (CPVC Threads) | | | Std. Pkg. | MRP |
|-----------------------------|-----------|----------|-----------|-------------|
| Size (inch) | Size (mm) | SAP Code | (Nos.) | (per piece) |
| 1/2 | 15 | 3087754 | 100 | 14 |
| 3/4 | 20 | 3087755 | 60 | 20 |
| 1 | 25 | 3087756 | 30 | 30 |
| 1 1/4 | 32 | 3087757 | 20 | 54 |
| 1 1/2 | 40 | 3087758 | 15 | 78 |
| 2 | 50 | 3087759 | 8 | 150 |



| Reducer Male Adaptor (CPVC Threads) | | | Std. Pkg. | MRP |
|-------------------------------------|-----------|----------|-----------|-------------|
| Size (inch) | Size (mm) | SAP Code | (Nos.) | (per piece) |
| 3/4 X 1/2 | 20 X 15 | 3087760 | 80 | 28 |



| End Cap - SOC | | | Std. Pkg. | MRP |
|---------------|-----------|----------|-----------|-------------|
| Size (inch) | Size (mm) | SAP Code | (Nos.) | (per piece) |
| 1/2 | 15 | 3087651 | 200 | 10 |
| 3/4 | 20 | 3087653 | 100 | 12 |
| 1 | 25 | 3087654 | 50 | 20 |
| 1 1/4 | 32 | 3087655 | 25 | 40 |
| 1 1/2 | 40 | 3087656 | 20 | 60 |
| 2 | 50 | 3087657 | 12 | 130 |



| Female Adaptor (CPVC Threads) | | | Std. Pkg. | MRP |
|-------------------------------|-----------|----------|-----------|-------------|
| Size (inch) | Size (mm) | SAP Code | (Nos.) | (per piece) |
| 1/2 | 15 | 3087762 | 100 | 18 |
| 3/4 | 20 | 3087669 | 50 | 26 |
| 1 | 25 | 3087680 | 30 | 38 |
| 1 1/4 | 32 | * | * | * |
| 1 1/2 | 40 | * | * | * |



| Elbow (Brass Threads) | | | Std. Pkg. | MRP |
|-----------------------|-----------|----------|-----------|-------------|
| Size (inch) | Size (mm) | SAP Code | (Nos.) | (per piece) |
| 1/2 | 15 | 3087702 | 30 | 62 |
| 3/4 | 20 | 3087712 | 20 | 92 |
| 1 | 25 | 3087713 | 12 | 364 |



| Reducer Female Adaptor (CPVC Threads) | | | Std. Pkg. | MRP |
|---------------------------------------|-----------|----------|-----------|-------------|
| Size (inch) | Size (mm) | SAP Code | (Nos.) | (per piece) |
| 3/4 X 1/2 | 20 X 15 | 3087691 | 60 | 36 |

Reducer Elbow (Brass Threads)



| Size (inch) | Size (mm) | SAP Code | Std. Pkg. (Nos.) | MRP (per piece) |
|-------------|-----------|----------|------------------|-----------------|
| ¾ X ½ | 20 X 15 | 3087714 | 25 | 64 |
| 1 X ½ | 25 X 15 | 3087715 | 15 | 122 |
| 1 X ¾ | 25 X 20 | 3087716 | 15 | 192 |

Tee (Brass Threads)



| Size (inch) | Size (mm) | SAP Code | Std. Pkg. (Nos.) | MRP (per piece) |
|-------------|--------------|----------|------------------|-----------------|
| ½ X ½ X ½ | 15 X 15 X 15 | 3087670 | 50 | 80 |
| ¾ X ¾ X ¾ | 20 X 20 X 20 | 3087671 | 25 | 122 |
| 1 X 1 X 1 | 25 X 25 X 25 | 3087672 | 10 | 226 |

Reducer Tee (Brass Threads)



| Size (inch) | Size (mm) | SAP Code | Std. Pkg. (Nos.) | MRP (per piece) |
|-------------|--------------|----------|------------------|-----------------|
| ¾ X ¾ X ½ | 20 X 20 X 15 | 3087673 | 20 | 82 |
| 1 X 1 X ½ | 25 X 25 X 15 | 3087674 | 20 | 142 |
| 1 X 1 X ¾ | 25 X 25 X 20 | 3087675 | 10 | 212 |

Male Adaptor (Brass Threads)



| Size (inch) | Size (mm) | SAP Code | Std. Pkg. (Nos.) | MRP (per piece) |
|-------------|-----------|----------|------------------|-----------------|
| ½ | 15 | 3087676 | 40 | 165 |
| ¾ | 20 | 3087677 | 25 | 212 |
| 1 | 25 | 3087678 | 12 | 332 |
| 1¼ | 32 | 3087679 | 8 | 677 |
| 1½ | 40 | 3087681 | 6 | 839 |
| 2 | 50 | 3087682 | 5 | 1609 |

Reducer Male Adaptor (Brass Threads)



| Size (inch) | Size (mm) | SAP Code | Std. Pkg. (Nos.) | MRP (per piece) |
|-------------|-----------|----------|------------------|-----------------|
| ¾ X ½ | 20 X 15 | 3087683 | 30 | 102 |
| 1 X ½ | 25 X 15 | * | * | * |
| 1 X ¾ | 25 X 20 | * | * | * |

Female Adaptor (Brass Threads)



| Size (inch) | Size (mm) | SAP Code | Std. Pkg. (Nos.) | MRP (per piece) |
|-------------|-----------|----------|------------------|-----------------|
| ½ | 15 | 3087684 | 40 | 159 |
| ¾ | 20 | 3087685 | 25 | 213 |
| 1 | 25 | 3087686 | 12 | 325 |
| 1¼ | 32 | 3087687 | 8 | 689 |
| 1½ | 40 | 3087688 | 8 | 768 |
| 2 | 50 | 3087689 | 5 | 1475 |

Reducer Female Adaptor (Brass Threads)



| Size (inch) | Size (mm) | SAP Code | Std. Pkg. (Nos.) | MRP (per piece) |
|-------------|-----------|----------|------------------|-----------------|
| ¾ X ½ | 20 X 15 | 3087690 | 40 | 91 |
| 1 X ½ | 25 X 15 | 3087692 | 20 | 118 |
| 1 X ¾ | 25 X 20 | 3087693 | 25 | 137 |

Ball Valve



| Size (inch) | Size (mm) | SAP Code | Std. Pkg. (Nos.) | MRP (per piece) |
|-------------|-----------|----------|------------------|-----------------|
| ½ | 15 | 3087910 | | 88 |
| ¾ | 20 | 3087912 | | 152 |
| 1 | 25 | 3087913 | | 288 |
| 1¼ | 32 | 3087914 | | 442 |
| 1½ | 40 | 3087915 | | 790 |
| 2 | 50 | 3087916 | | 1484 |

Medium Duty



| Size (ML) | SAP Code | Std. Pkg. (Nos.) | MRP (per piece) |
|-----------|----------|------------------|-----------------|
| 118 ML | 3087709 | 24 | 202 |
| 237 ML | 3087710 | 24 | 340 |
| 473 ML | * | * | * |
| 946 ML | * | * | * |

End Plug (Threaded)



| Size (inch) | Size (mm) | SAP Code | Std. Pkg. (Nos.) | MRP (per piece) |
|-------------|-----------|----------|------------------|-----------------|
| ½ | 15 | 3087917 | - | 10 |
| ¾ | 20 | * | * | * |

Cross - SOC



| Size (inch) | Size (mm) | SAP Code | Std. Pkg. (Nos.) | MRP (per piece) |
|-------------|-----------|----------|------------------|-----------------|
| ¾ | 20 | * | * | * |
| 1 | 25 | * | * | * |

Step Over Bend



| Size (inch) | Size (mm) | SAP Code | Std. Pkg. (Nos.) | MRP (per piece) |
|-------------|-----------|----------|------------------|-----------------|
| ½ | 15 | * | * | * |
| ¾ | 20 | * | * | * |
| 1 | 25 | * | * | * |

Tank Adaptor (THD x SOC)



| Size (inch) | Size (mm) | SAP Code | Std. Pkg. (Nos.) | MRP (per piece) |
|-------------|-----------|----------|------------------|-----------------|
| ½ | 15 | * | * | * |
| ¾ | 20 | * | * | * |
| 1 | 25 | * | * | * |
| 1¼ | 32 | * | * | * |
| 1½ | 40 | * | * | * |
| 2 | 50 | * | * | * |

Wavin uPVC

Wavin uPVC plumbing system is a lead-free system making it an ideal and safe choice for potable water distribution.

Wavin uPVC is an innovatively developed superior and cost-effective system that is easy to install and suitable for cold water plumbing applications. It has characteristics like UV resistance, lead-free property, and lightweight, to name a few. Its internal smooth surface reduces friction that helps in preventing internal damage and gives durability to the entire system.

Wavin uPVC pipes and fittings are suitable for all uptake and down take lines, terrace looping including pipework applications.

Key Features & Highlights:



Perfect for cold water applications



100% Leak-proof joints and lead-free pipes



Smooth surface inside for seamless flow



UV-resistant and safe for potable water distribution



uPVC Pipes & Fittings

Wavin uPVC pipes SCH 40 and SCH 80 are as per ASTM D1785 standards & uPVC fittings SCH 80 are as per ASTM D2467 standards.



| Pipe SCH - 40, 3 mtr. | | | Std. Pkg. | MRP |
|-----------------------|-----------|----------|-----------|--------------|
| Size (inch) | Size (mm) | SAP Code | (Nos.) | (per length) |
| 1/2 | 15 | 3087422 | 60 | 226 |
| 3/4 | 20 | 3087431 | 40 | 292 |
| 1 | 25 | 3087454 | 30 | 430 |
| 1 1/4 | 32 | 3087466 | 18 | 602 |
| 1 1/2 | 40 | 3087476 | 10 | 716 |
| 2 | 50 | 3087487 | 8 | 959 |



| Pipe SCH - 40, 6 mtr. | | | Std. Pkg. | MRP |
|-----------------------|-----------|----------|-----------|--------------|
| Size (inch) | Size (mm) | SAP Code | (Nos.) | (per length) |
| 1/2 | 15 | 3087540 | 30 | 452 |
| 3/4 | 20 | 3087204 | 20 | 584 |
| 1 | 25 | 3087258 | 10 | 858 |
| 1 1/4 | 32 | 3087313 | 8 | 1206 |
| 1 1/2 | 40 | 3087425 | 8 | 1430 |
| 2 | 50 | 3087519 | 5 | 1918 |



| Pipe SCH - 80, 3 mtr. | | | Std. Pkg. | MRP |
|-----------------------|-----------|----------|-----------|--------------|
| Size (inch) | Size (mm) | SAP Code | (Nos.) | (per length) |
| 1/2 | 15 | 3087493 | 60 | 284 |
| 3/4 | 20 | 3087507 | 40 | 378 |
| 1 | 25 | 3087500 | 30 | 567 |
| 1 1/4 | 32 | 3087513 | 18 | 788 |
| 1 1/2 | 40 | 3087520 | 10 | 964 |
| 2 | 50 | 3087526 | 8 | 1322 |



| Pipe SCH - 80, 6 mtr. | | | Std. Pkg. | MRP |
|-----------------------|-----------|----------|-----------|--------------|
| Size (inch) | Size (mm) | SAP Code | (Nos.) | (per length) |
| 1/2 | 15 | 3087528 | 30 | 568 |
| 3/4 | 20 | 3087533 | 20 | 758 |
| 1 | 25 | 3087536 | 10 | 1134 |
| 1 1/4 | 32 | 3087544 | 8 | 1574 |
| 1 1/2 | 40 | 3087209 | 8 | 1926 |
| 2 | 50 | 3087213 | 5 | 2644 |



| Coupler - SOC | | | Std. Pkg. | MRP |
|---------------|-----------|----------|-----------|-------------|
| Size (inch) | Size (mm) | SAP Code | (Nos.) | (per piece) |
| 1/2 | 15 | 3087455 | 50 | 14 |
| 3/4 | 20 | 3087465 | 30 | 18 |
| 1 | 25 | 3087473 | 20 | 24 |
| 1 1/4 | 32 | 3087484 | 10 | 36 |
| 1 1/2 | 40 | 3087494 | 8 | 50 |
| 2 | 50 | 3087502 | 6 | 70 |



| Reducer Coupler - SOC | | | Std. Pkg. | MRP |
|-----------------------|-----------|----------|-----------|-------------|
| Size (inch) | Size (mm) | SAP Code | (Nos.) | (per piece) |
| 3/4 X 1/2 | 20 X 15 | 3087381 | 30 | 18 |
| 1 X 1/2 | 25 X 15 | 3087460 | 20 | 28 |
| 1 X 3/4 | 25 X 20 | 3087471 | 20 | 30 |
| 1 1/4 X 1/2 | 32 X 15 | 3087479 | 10 | 38 |
| 1 1/4 X 3/4 | 32 X 20 | 3087482 | 10 | 40 |
| 1 1/4 X 1 | 32 X 25 | 3087490 | 10 | 42 |
| 1 1/2 X 1/2 | 40 X 15 | 3087202 | 8 | 48 |
| 1 1/2 X 3/4 | 40 X 20 | 3087207 | 8 | 52 |
| 1 1/2 X 1 | 40 X 25 | 3087212 | 8 | 52 |
| 1 1/2 X 1 1/4 | 40 X 32 | 3087218 | 8 | 58 |
| 2 X 1/2 | 50 X 15 | 3087222 | 6 | 74 |
| 2 X 3/4 | 50 X 20 | 3087230 | 6 | 80 |
| 2 X 1 | 50 X 25 | 3087239 | 6 | 82 |
| 2 X 1 1/4 | 50 X 32 | 3087242 | 6 | 86 |
| 2 X 1 1/2 | 50 X 40 | 3087248 | 6 | 86 |



| Elbow 45° - SOC | | | Std. Pkg. | MRP |
|-----------------|-----------|----------|-----------|-------------|
| Size (inch) | Size (mm) | SAP Code | (Nos.) | (per piece) |
| 1/2 | 15 | 3087417 | 40 | 16 |
| 3/4 | 20 | 3087421 | 15 | 22 |
| 1 | 25 | 3087442 | 10 | 32 |
| 1 1/4 | 32 | * | * | * |
| 1 1/2 | 40 | 3087150 | | * |
| 2 | 50 | * | * | * |



| Elbow 90° - SOC | | | Std. Pkg. | MRP |
|-----------------|-----------|----------|-----------|-------------|
| Size (inch) | Size (mm) | SAP Code | (Nos.) | (per piece) |
| 1/2 | 15 | 3087919 | 25 | 16 |
| 3/4 | 20 | 3087911 | 15 | 25 |
| 1 | 25 | 3087374 | 10 | 35 |
| 1 1/4 | 32 | 3087383 | 7 | 60 |
| 1 1/2 | 40 | 3087397 | 5 | 72 |
| 2 | 50 | 3087408 | 4 | 114 |



| Reducer Elbow 90° - SOC | | | Std. Pkg. | MRP |
|-------------------------|-----------|----------|-----------|-------------|
| Size (inch) | Size (mm) | SAP Code | (Nos.) | (per piece) |
| 3/4 X 1/2 | 20 X 15 | 3087415 | 25 | 22 |
| 1 X 1/2 | 25 X 15 | 3087435 | 12 | 30 |
| 1 X 3/4 | 25 X 20 | 3087444 | 12 | 40 |
| 1 1/4 x 3/4 | 32 X 20 | * | * | * |
| 1 1/4 x 1 | 32 X 25 | * | * | * |



| Tee - SOC | | | Std. Pkg. (Nos.) | MRP (per piece) |
|-------------|-----------|----------|------------------|-----------------|
| Size (inch) | Size (mm) | SAP Code | | |
| 1/2 | 15 | 3087217 | 15 | 22 |
| 3/4 | 20 | 3087221 | 10 | 30 |
| 1 | 25 | 3087227 | 8 | 48 |
| 1 1/4 | 32 | 3087231 | 4 | 86 |
| 1 1/2 | 40 | 3087238 | 4 | 100 |
| 2 | 50 | 3087241 | 2 | 170 |



| MABT - (Brass Threads) | | | Std. Pkg. (Nos.) | MRP (per piece) |
|------------------------|-----------|----------|------------------|-----------------|
| Size (inch) | Size (mm) | SAP Code | | |
| 1/2 | 15 | 3087251 | 25 | 164 |
| 3/4 | 20 | 3087264 | 20 | 226 |
| 1 | 25 | 3087269 | 12 | 304 |
| 1 1/4 | 32 | 3087272 | 9 | 462 |
| 1 1/2 | 40 | 3087278 | 9 | 572 |
| 2 | 50 | 3087282 | 4 | 864 |



| Reducer Tee - SOC | | | Std. Pkg. (Nos.) | MRP (per piece) |
|-------------------|-----------|----------|------------------|-----------------|
| Size (inch) | Size (mm) | SAP Code | | |
| 3/4 X 1/2 | 20 X 15 | 3087247 | 10 | 26 |
| 1 X 1/2 | 25 X 15 | 3087252 | 8 | 46 |
| 1 X 3/4 | 25 X 20 | 3087263 | 8 | 46 |
| 1 1/4 X 1/2 | 32 X 15 | 3087268 | 4 | 90 |
| 1 1/4 X 3/4 | 32 X 20 | 3087273 | 4 | 90 |
| 1 1/4 X 1 | 32 X 25 | 3087277 | 4 | 90 |
| 1 1/2 X 1/2 | 40 X 15 | 3087283 | 4 | 92 |
| 1 1/2 X 3/4 | 40 X 20 | 3087288 | 4 | 102 |
| 1 1/2 X 1 | 40 X 25 | 3087293 | 4 | 102 |
| 1 1/2 X 1 1/4 | 40 X 32 | 3087298 | 4 | 124 |
| 2 X 1/2 | 50 X 15 | 3087301 | 2 | 148 |
| 2 X 3/4 | 50 X 20 | 3087307 | 2 | 162 |
| 2 X 1 | 50 X 25 | 3087321 | 2 | 162 |
| 2 X 1 1/4 | 50 X 32 | 3087334 | 2 | 162 |
| 2 X 1 1/2 | 50 X 40 | 3087344 | 2 | 162 |



| Reducer MABT (Brass Threads) | | | Std. Pkg. (Nos.) | MRP (per piece) |
|------------------------------|-----------|----------|------------------|-----------------|
| Size (inch) | Size (mm) | SAP Code | | |
| 3/4 X 1/2 | 20 X 15 | 3087289 | 20 | 178 |



| Union | | | Std. Pkg. (Nos.) | MRP (per piece) |
|-------------|-----------|----------|------------------|-----------------|
| Size (inch) | Size (mm) | SAP Code | | |
| 1/2 | 15 | 3087501 | 20 | 36 |
| 3/4 | 20 | 3087508 | 15 | 42 |
| 1 | 25 | 3087511 | 8 | 66 |
| 1 1/4 | 32 | 3087521 | 5 | 108 |
| 1 1/2 | 40 | 3087527 | 4 | 132 |
| 2 | 50 | 3087534 | 3 | 196 |



| Tank Adaptor (THD X THD) | | | Std. Pkg. (Nos.) | MRP (per piece) |
|--------------------------|-----------|----------|------------------|-----------------|
| Size (inch) | Size (mm) | SAP Code | | |
| 1/2 | 15 | 3087453 | 25 | 27 |
| 3/4 | 20 | 3087464 | 20 | 42 |
| 1 | 25 | 3087474 | 10 | 56 |
| 1 1/4 | 32 | 3087486 | 8 | 82 |
| 1 1/2 | 40 | 3087492 | 6 | 98 |
| 2 | 50 | 3087499 | 4 | 128 |



| MAPT (uPVC Threads) | | | Std. Pkg. (Nos.) | MRP (per piece) |
|---------------------|-----------|----------|------------------|-----------------|
| Size (inch) | Size (mm) | SAP Code | | |
| 1/2 | 15 | 3087570 | 50 | 10 |
| 3/4 | 20 | 3087611 | 50 | 12 |
| 1 | 25 | 3087615 | 25 | 18 |
| 1 1/4 | 32 | 3087616 | 20 | 30 |
| 1 1/2 | 40 | 3087617 | 12 | 38 |
| 2 | 50 | 3087621 | 8 | 56 |



| Reducer MAPT (uPVC Threads) | | | Std. Pkg. (Nos.) | MRP (per piece) |
|-----------------------------|-----------|----------|------------------|-----------------|
| Size (inch) | Size (mm) | SAP Code | | |
| 3/4 X 1/2 | 20 X 15 | 3087333 | 40 | 14 |



| FAPT (uPVC Threads) | | | Std. Pkg. (Nos.) | MRP (per piece) |
|---------------------|-----------|----------|------------------|-----------------|
| Size (inch) | Size (mm) | SAP Code | | |
| 1/2 | 15 | 3087343 | 50 | 12 |
| 3/4 | 20 | 3087358 | 40 | 18 |
| 1 | 25 | 3087362 | 15 | 24 |
| 1 1/4 | 32 | 3087371 | 12 | 36 |
| 1 1/2 | 40 | 3087385 | 9 | 44 |
| 2 | 50 | 3087392 | 5 | 68 |



| Reducer Bush | | | Std. Pkg. (Nos.) | MRP (per piece) |
|---------------|-----------|----------|------------------|-----------------|
| Size (inch) | Size (mm) | SAP Code | | |
| 3/4 X 1/2 | 20 X 15 | 3087566 | 80 | 10 |
| 1 X 1/2 | 25 X 15 | 3087575 | 50 | 14 |
| 1 X 3/4 | 25 X 20 | 3087579 | 50 | 14 |
| 1 1/4 X 1/2 | 32 X 15 | 3087582 | 30 | 28 |
| 1 1/4 X 3/4 | 32 X 20 | 3087586 | 30 | 28 |
| 1 1/4 X 1 | 32 X 25 | 3087590 | 30 | 28 |
| 1 1/2 X 1/2 | 40 X 15 | 3087594 | 20 | 36 |
| 1 1/2 X 3/4 | 40 X 20 | 3087598 | 20 | 38 |
| 1 1/2 X 1 | 40 X 25 | 3087602 | 20 | 38 |
| 1 1/2 X 1 1/4 | 40 X 32 | 3087605 | 20 | 38 |
| 2 X 1/2 | 50 X 15 | 3087608 | 12 | 70 |
| 2 X 3/4 | 50 X 20 | 3087613 | 12 | 70 |
| 2 X 1 | 50 X 25 | 3087199 | 12 | 70 |
| 2 X 1 1/4 | 50 X 32 | 3087257 | 12 | 60 |
| 2 X 1 1/2 | 50 X 40 | 3087318 | 12 | 60 |



| Reducer FAPT (uPVC Threads) | | | Std. Pkg. (Nos.) | MRP (per piece) |
|-----------------------------|-----------|----------|------------------|-----------------|
| Size (inch) | Size (mm) | SAP Code | | |
| 3/4 X 1/2 | 20 X 15 | 3087402 | 40 | 11 |

**End Cap**

| Size (inch) | Size (mm) | SAP Code | Std. Pkg. (Nos.) | MRP (per piece) |
|-------------|-----------|----------|------------------|-----------------|
| 1/2 | 15 | 3087509 | 130 | 8 |
| 3/4 | 20 | 3087514 | 90 | 12 |
| 1 | 25 | 3087522 | 30 | 18 |
| 1 1/4 | 32 | 3087324 | 20 | 30 |
| 1 1/2 | 40 | 3087430 | 10 | 36 |
| 2 | 50 | 3087517 | 12 | 56 |

**Ball Valve**

| Size (inch) | Size (mm) | SAP Code | Std. Pkg. (Nos.) | MRP (per piece) |
|-------------|-----------|----------|------------------|-----------------|
| 1/2 | 15 | 3087537 | | 146 |
| 3/4 | 20 | 3087543 | | 204 |
| 1 | 25 | 3087547 | | 262 |
| 1 1/4 | 32 | 3087551 | | 432 |
| 1 1/2 | 40 | 3087556 | | 650 |
| 2 | 50 | 3087562 | | 942 |

**FABT (Brass Threads)**

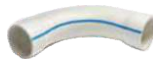
| Size (inch) | Size (mm) | SAP Code | Std. Pkg. (Nos.) | MRP (per piece) |
|-------------|-----------|----------|------------------|-----------------|
| 1/2 | 15 | 3087292 | 30 | 124 |
| 3/4 | 20 | 3087299 | 20 | 158 |
| 1 | 25 | 3087303 | 10 | 228 |
| 1 1/4 | 32 | 3087310 | 9 | 338 |
| 1 1/2 | 40 | 3087325 | 9 | 452 |
| 2 | 50 | 3087330 | 4 | 574 |

**Medium Duty Solvent**

| Size (ML) | Size (mm) | SAP Code | Std. Pkg. (Nos.) | MRP (per piece) |
|-----------|-----------|----------|------------------|-----------------|
| 59 ML | | 3087394 | 30 | * |
| 118 ML | | 3087400 | 24 | 124 |
| 237 ML | | 3087410 | 24 | 180 |

**Reducer FABT (Brass Threads)**

| Size (inch) | Size (mm) | SAP Code | Std. Pkg. (Nos.) | MRP (per piece) |
|-------------|-----------|----------|------------------|-----------------|
| 3/4 X 1/2 | 20 X 15 | 3087339 | 25 | 124 |
| 1 X 1/2 | 25 X 15 | * | * | * |
| 1 X 3/4 | 25 X 20 | * | * | * |

**Long Radius Bend**

| Size (inch) | Size (mm) | SAP Code | Std. Pkg. (Nos.) | MRP (per piece) |
|-------------|-----------|----------|------------------|-----------------|
| 1/2 | 15 | * | * | * |
| 3/4 | 20 | * | * | * |
| 1 | 25 | * | * | * |
| 1 1/4 | 32 | * | * | * |
| 1 1/2 | 40 | * | * | * |
| 2 | 50 | * | * | * |

**Elbow (Brass Threads)**

| Size (inch) | Size (mm) | SAP Code | Std. Pkg. (Nos.) | MRP (per piece) |
|-------------|-----------|----------|------------------|-----------------|
| 1/2 | 15 | 3087342 | 25 | 118 |
| 3/4 | 20 | 3087350 | 15 | 162 |
| 1 | 25 | 3087359 | 8 | 298 |

**Flange Vanstone**

| Size (inch) | Size (mm) | SAP Code | Std. Pkg. (Nos.) | MRP (per piece) |
|-------------|-----------|----------|------------------|-----------------|
| 1/2 | 15 | * | * | * |
| 3/4 | 20 | * | * | * |
| 1 | 25 | * | * | * |
| 1 1/4 | 32 | * | * | * |
| 1 1/2 | 40 | * | * | * |
| 2 | 50 | * | * | * |

**Reducer Elbow (Brass Threads)**

| Size (inch) | Size (mm) | SAP Code | Std. Pkg. (Nos.) | MRP (per piece) |
|-------------|-----------|----------|------------------|-----------------|
| 3/4 X 1/2 | 20 X 15 | 3087364 | 15 | 150 |
| 1 X 1/2 | 25 X 15 | * | * | * |

**Tee (Brass Threads)**

| Size (inch) | Size (mm) | SAP Code | Std. Pkg. (Nos.) | MRP (per piece) |
|-------------|-----------|----------|------------------|-----------------|
| 1/2 | 15 | 3087369 | 15 | 134 |
| 3/4 | 20 | 3087373 | 12 | 168 |
| 1 | 25 | 3087379 | 6 | 322 |

**Cross Tee**

| Size (inch) | Size (mm) | SAP Code | Std. Pkg. (Nos.) | MRP (per piece) |
|-------------|-----------|----------|------------------|-----------------|
| 1/2 | 15 | * | * | * |
| 3/4 | 20 | * | * | * |
| 1 | 25 | * | * | * |
| 1 1/4 | 32 | * | * | * |
| 1 1/2 | 40 | * | * | * |
| 2 | 50 | * | * | * |

**Reducer Tee (Brass Threads)**

| Size (inch) | Size (mm) | SAP Code | Std. Pkg. (Nos.) | MRP (per piece) |
|-------------|-----------|----------|------------------|-----------------|
| 3/4 X 1/2 | 20 X 15 | 3087389 | 12 | 148 |
| 1 X 1/2 | 25 X 15 | * | * | * |
| 1 X 3/4 | 25 X 20 | * | * | * |

**Tank Adapter (THD X SOC)**

| Size (inch) | Size (mm) | SAP Code | Std. Pkg. (Nos.) | MRP (per piece) |
|-------------|-----------|----------|------------------|-----------------|
| 1/2 | 15 | * | * | * |
| 3/4 | 20 | * | * | * |
| 1 | 25 | * | * | * |
| 1 1/4 | 32 | * | * | * |
| 1 1/2 | 40 | * | * | * |
| 2 | 50 | * | * | * |

**Step Over Bend**

| Size (inch) | Size (mm) | SAP Code | Std. Pkg. (Nos.) | MRP (per piece) |
|-------------|-----------|----------|------------------|-----------------|
| 1/2 | 15 | * | * | * |
| 3/4 | 20 | * | * | * |
| 1 | 25 | * | * | * |
| 1 1/4 | 32 | * | * | * |
| 1 1/2 | 40 | * | * | * |
| 2 | 50 | * | * | * |

Wavin SWR & AGRI

Wavin SWR & Agri systems offer high performances through the most advanced PVC material used for soil, waste, and rainwater drainage applications.

Wavin SWR system is specially designed for easy, fool-proof, and cost-effective installation. Moreover, it is free from scale, algae or rust formation, weathering, and chemical action. The system does not require any solvent, cementing, welding, soldering, or threading for making the joints, and is pressure tested for 100% leak-proof performance.

Wavin Agri Pipes are manufactured using world-class uPVC material, which is achieved by unplasticized PVC material, to get more strength and stiffness. This material can stabilize UV radiation and has high resistance against corrosion, all of which make these pipes ideal for use in Agri or any outdoor operations.

Key Features & Highlights:



Ring-fit and Solvent cement options



RoHS
RoHS Compliant
(Heavy-metals free)



Comprehensive range of pipes and fittings



Easy installation & long durability



100% Leak-proof joints and lead-free pipes



UV-resistant



SWR Pipes & Fittings

Wavin SWR pipes are as per IS 13592 standards & SWR fittings are as per IS 14735 standards.



| Type A, Ring Single Socket, 0.6 mtr. | | | | MRP |
|--------------------------------------|-----------|----------|--|--------------|
| Size (inch) | Size (mm) | SAP Code | | (per length) |
| 2½ | 75 | 3087398 | | 144 |
| 3 | 90 | 3087404 | | 186 |
| 4 | 110 | 3087416 | | 244 |
| 6 | 160 | 3087427 | | 570 |



| Type B, Ring Single Socket, 0.6 mtr. | | | | MRP |
|--------------------------------------|-----------|----------|--|--------------|
| Size (inch) | Size (mm) | SAP Code | | (per length) |
| 2½ | 75 | 3087409 | | 238 |
| 3 | 90 | 3087472 | | 264 |
| 4 | 110 | 3087488 | | 332 |
| 6 | 160 | 3087496 | | 654 |



| Type A, Ring Single Socket, 0.9 mtr. | | | | MRP |
|--------------------------------------|-----------|----------|--|--------------|
| Size (inch) | Size (mm) | SAP Code | | (per length) |
| 2½ | 75 | 3087305 | | 212 |
| 3 | 90 | 3087316 | | 272 |
| 4 | 110 | 3087338 | | 344 |
| 6 | 160 | 3087348 | | 764 |



| Type B, Ring Single Socket, 0.9 mtr. | | | | MRP |
|--------------------------------------|-----------|----------|--|--------------|
| Size (inch) | Size (mm) | SAP Code | | (per length) |
| 2½ | 75 | 3087571 | | 334 |
| 3 | 90 | 3087574 | | 388 |
| 4 | 110 | 3087578 | | 476 |
| 6 | 160 | 3087581 | | 958 |



| Type A, Ring Single Socket, 1.2 mtr. | | | | MRP |
|--------------------------------------|-----------|----------|--|--------------|
| Size (inch) | Size (mm) | SAP Code | | (per length) |
| 2½ | 75 | 3087354 | | 258 |
| 3 | 90 | 3087368 | | 422 |
| 4 | 110 | 3087377 | | 384 |
| 6 | 160 | 3087386 | | 1016 |



| Type B, Ring Single Socket, 1.2 mtr. | | | | MRP |
|--------------------------------------|-----------|----------|--|--------------|
| Size (inch) | Size (mm) | SAP Code | | (per length) |
| 2½ | 75 | 3087588 | | 436 |
| 3 | 90 | 3087189 | | 504 |
| 4 | 110 | 3087249 | | 648 |
| 6 | 160 | 3087329 | | 1256 |



| Type A, Ring Single Socket, 1.8 mtr. | | | | MRP |
|--------------------------------------|-----------|----------|--|--------------|
| Size (inch) | Size (mm) | SAP Code | | (per length) |
| 2½ | 75 | 3087266 | | 388 |
| 3 | 90 | 3087276 | | 532 |
| 4 | 110 | 3087285 | | 682 |
| 6 | 160 | 3087296 | | 1436 |



| Type B, Ring Single Socket, 1.8 mtr. | | | | MRP |
|--------------------------------------|-----------|----------|--|--------------|
| Size (inch) | Size (mm) | SAP Code | | (per length) |
| 2½ | 75 | 3087555 | | 706 |
| 3 | 90 | 3087560 | | 824 |
| 4 | 110 | 3087565 | | 1002 |
| 6 | 160 | 3087569 | | 1780 |



| Type A, Ring Single Socket, 3 mtr. | | | | MRP |
|------------------------------------|-----------|----------|--|--------------|
| Size (inch) | Size (mm) | SAP Code | | (per length) |
| 2½ | 75 | 3087228 | | 572 |
| 3 | 90 | 3087235 | | 800 |
| 4 | 110 | 3087246 | | 994 |
| 6 | 160 | 3087256 | | 2246 |



| Type B, Ring Single Socket, 3 mtr. | | | | MRP |
|------------------------------------|-----------|----------|--|--------------|
| Size (inch) | Size (mm) | SAP Code | | (per length) |
| 2½ | 75 | 3087532 | | 978 |
| 3 | 90 | 3087539 | | 1206 |
| 4 | 110 | 3087548 | | 1446 |
| 6 | 160 | 3087553 | | 2796 |



| Type A, Ring Single Socket, 6 mtr. | | | | MRP |
|------------------------------------|-----------|----------|--|--------------|
| Size (inch) | Size (mm) | SAP Code | | (per length) |
| 2½ | 75 | 3087607 | | 1132 |
| 3 | 90 | 3087610 | | 1584 |
| 4 | 110 | 3087612 | | 1980 |
| 6 | 160 | 3087614 | | 4472 |



| Type B, Ring Single Socket, 6 mtr. | | | | MRP |
|------------------------------------|-----------|----------|--|--------------|
| Size (inch) | Size (mm) | SAP Code | | (per length) |
| 2½ | 75 | 3087495 | | 1950 |
| 3 | 90 | 3087506 | | 2398 |
| 4 | 110 | 3087512 | | 2878 |
| 6 | 160 | 3087525 | | 5578 |

**Type A, Ring Double Socket, 0.6 mtr.**

| Size (inch) | Size (mm) | SAP Code | MRP (per length) |
|-------------|-----------|----------|------------------|
| 2½ | 75 | 3087232 | 172 |
| 3 | 90 | 3087237 | 240 |
| 4 | 110 | 3087244 | 294 |
| 6 | 160 | 3087250 | 594 |

**Type B, Ring Double Socket, 1.2 mtr.**

| Size (inch) | Size (mm) | SAP Code | MRP (per length) |
|-------------|-----------|----------|------------------|
| 2½ | 75 | 3087223 | 502 |
| 3 | 90 | 3087336 | 568 |
| 4 | 110 | 3087443 | 714 |
| 6 | 160 | 3087531 | 1286 |

**Type A, Ring Double Socket, 0.9 mtr.**

| Size (inch) | Size (mm) | SAP Code | MRP (per length) |
|-------------|-----------|----------|------------------|
| 2½ | 75 | 3087192 | 172 |
| 3 | 90 | 3087195 | 240 |
| 4 | 110 | 3087198 | 294 |
| 6 | 160 | 3087203 | 594 |

**Type B, Ring Double Socket, 1.8 mtr.**

| Size (inch) | Size (mm) | SAP Code | MRP (per length) |
|-------------|-----------|----------|------------------|
| 2½ | 75 | 3087308 | 714 |
| 3 | 90 | 3087312 | 834 |
| 4 | 110 | 3087319 | 1066 |
| 6 | 160 | 3087322 | 1812 |

**Type A, Ring Double Socket, 1.2 mtr.**

| Size (inch) | Size (mm) | SAP Code | MRP (per length) |
|-------------|-----------|----------|------------------|
| 2½ | 75 | 3087208 | 288 |
| 3 | 90 | 3087214 | 422 |
| 4 | 110 | 3087224 | 500 |
| 6 | 160 | 3087229 | 1030 |

**Type B, Ring Double Socket, 3 mtr.**

| Size (inch) | Size (mm) | SAP Code | MRP (per length) |
|-------------|-----------|----------|------------------|
| 2½ | 75 | 3087287 | 1018 |
| 3 | 90 | 3087291 | 1226 |
| 4 | 110 | 3087297 | 1510 |
| 6 | 160 | 3087302 | 3020 |

**Type A, Ring Double Socket, 1.8 mtr.**

| Size (inch) | Size (mm) | SAP Code | MRP (per length) |
|-------------|-----------|----------|------------------|
| 2½ | 75 | 3087182 | 412 |
| 3 | 90 | 3087184 | 536 |
| 4 | 110 | 3087186 | 718 |
| 6 | 160 | 3087188 | 1466 |

**Type B, Ring Double Socket, 6 mtr.**

| Size (inch) | Size (mm) | SAP Code | MRP (per length) |
|-------------|-----------|----------|------------------|
| 2½ | 75 | 3087260 | 2033 |
| 3 | 90 | 3087267 | 2445 |
| 4 | 110 | 3087274 | 3008 |
| 6 | 160 | 3087279 | 6018 |

**Type A, Ring Double Socket, 3 mtr.**

| Size (inch) | Size (mm) | SAP Code | MRP (per length) |
|-------------|-----------|----------|------------------|
| 2½ | 75 | 3087176 | 606 |
| 3 | 90 | 3087177 | 810 |
| 4 | 110 | 3087178 | 1092 |
| 6 | 160 | 3087179 | 2364 |


**Type B, Ring Double Socket, 0.6 mtr.**

| Size (inch) | Size (mm) | SAP Code | MRP (per length) |
|-------------|-----------|----------|------------------|
| 2½ | 75 | 3087546 | 272 |
| 3 | 90 | 3087552 | 288 |
| 4 | 110 | 3087558 | 378 |
| 6 | 160 | 3087563 | 688 |


**Type B, Ring Double Socket, 0.9 mtr.**

| Size (inch) | Size (mm) | SAP Code | MRP (per length) |
|-------------|-----------|----------|------------------|
| 2½ | 75 | 3087337 | 382 |
| 3 | 90 | 3087345 | 444 |
| 4 | 110 | 3087367 | 544 |
| 6 | 160 | 3087181 | 992 |


Ring Socket




| Coupler | | Std. Pkg. (Nos.) | MRP (per piece) |
|-------------|-----------|------------------|-----------------|
| Size (inch) | Size (mm) | SAP Code | |
| 2½ | 75 | 3087860 | 42 68 |
| 3 | 90 | * | * * |
| 4 | 110 | 3087865 | 45 126 |
| 6 | 160 | * | * * |




| Double Tee with Door | | Std. Pkg. (Nos.) | MRP (per piece) |
|----------------------|-----------|------------------|-----------------|
| Size (inch) | Size (mm) | SAP Code | |
| 2½ | 75 | 3087887 | 22 292 |
| 3 | 90 | * | * * |
| 4 | 110 | 3087872 | 8 377 |
| 6 | 160 | * | * * |



| 87.5° Bend | | Std. Pkg. (Nos.) | MRP (per piece) |
|-------------|-----------|------------------|-----------------|
| Size (inch) | Size (mm) | SAP Code | |
| 2½ | 75 | 3087871 | 30 92 |
| 3 | 90 | * | * * |
| 4 | 110 | 3087866 | 22 178 |
| 6 | 160 | * | * * |




| Cleaning Pipe with Door | | Std. Pkg. (Nos.) | MRP (per piece) |
|-------------------------|-----------|------------------|-----------------|
| Size (inch) | Size (mm) | SAP Code | |
| 2½ | 75 | 3087864 | 24 124 |
| 3 | 90 | * | * * |
| 4 | 110 | 3087304 | 20 244 |
| 6 | 160 | * | * * |



| 87.5° Door Bend | | Std. Pkg. (Nos.) | MRP (per piece) |
|-----------------|-----------|------------------|-----------------|
| Size (inch) | Size (mm) | SAP Code | |
| 2½ | 75 | 3087882 | 25 124 |
| 3 | 90 | * | * * |
| 4 | 110 | 3087867 | 20 222 |
| 6 | 160 | * | * * |




| Reducer Tee | | Std. Pkg. (Nos.) | MRP (per piece) |
|-------------|-----------|------------------|-----------------|
| Size (inch) | Size (mm) | SAP Code | |
| 2½ X 4 | 110 X 75 | 3087879 | 20 210 |




| 45° Bend | | Std. Pkg. (Nos.) | MRP (per piece) |
|-------------|-----------|------------------|-----------------|
| Size (inch) | Size (mm) | SAP Code | |
| 2½ | 75 | 3087286 | 80 77 |
| 3 | 90 | * | * * |
| 4 | 110 | 3087294 | 29 142 |
| 6 | 160 | * | * * |




| Reducer Tee with Door | | Std. Pkg. (Nos.) | MRP (per piece) |
|-----------------------|-----------|------------------|-----------------|
| Size (inch) | Size (mm) | SAP Code | |
| 2½ X 4 | 110 X 75 | 3087880 | 15 266 |




| Single Tee | | Std. Pkg. (Nos.) | MRP (per piece) |
|-------------|-----------|------------------|-----------------|
| Size (inch) | Size (mm) | SAP Code | |
| 2½ | 75 | 3087884 | 40 132 |
| 3 | 90 | * | * * |
| 4 | 110 | 3087868 | 14 236 |
| 6 | 160 | * | * * |




| Single Y | | Std. Pkg. (Nos.) | MRP (per piece) |
|-------------|-----------|------------------|-----------------|
| Size (inch) | Size (mm) | SAP Code | |
| 2½ | 75 | 3087888 | 35 132 |
| 3 | * | * | * * |
| 4 | 110 | 3087873 | 12 292 |
| 6 | * | * | * * |




| Single Tee with Door | | Std. Pkg. (Nos.) | MRP (per piece) |
|----------------------|-----------|------------------|-----------------|
| Size (inch) | Size (mm) | SAP Code | |
| 2½ | 75 | 3087885 | 35 158 |
| 3 | 90 | * | * * |
| 4 | 110 | 3087869 | 12 284 |
| 6 | 160 | * | * * |



| Single Y with Door | | Std. Pkg. (Nos.) | MRP (per piece) |
|--------------------|-----------|------------------|-----------------|
| Size (inch) | Size (mm) | SAP Code | |
| 2½ | 75 | 3087861 | 30 190 |
| 3 | * | * | * * |
| 4 | 110 | 3087874 | 12 374 |
| 6 | * | * | * * |



| Double Tee | | Std. Pkg. (Nos.) | MRP (per piece) |
|-------------|-----------|------------------|-----------------|
| Size (inch) | Size (mm) | SAP Code | |
| 2½ | 75 | 3087886 | 30 190 |
| 3 | 90 | * | * * |
| 4 | 110 | 3087870 | 10 292 |
| 6 | 160 | * | * * |



| Double Y | | Std. Pkg. (Nos.) | MRP (per piece) |
|-------------|-----------|------------------|-----------------|
| Size (inch) | Size (mm) | SAP Code | |
| 2½ | 75 | 3087862 | 24 204 |
| 3 | * | * | * * |
| 4 | 110 | 3087875 | 7 396 |
| 6 | * | * | * * |

**Double Y with Door**

| Size (inch) | Size (mm) | SAP Code | Std. Pkg. (Nos.) | MRP (per piece) |
|-------------|-----------|----------|------------------|-----------------|
| 2½ | 75 | 3087863 | 20 | 282 |
| 3 | * | * | * | * |
| 4 | 110 | 3087876 | 6 | 484 |
| 6 | * | * | * | * |

**Reducer**

| Size (inch) | Size (mm) | SAP Code | Std. Pkg. (Nos.) | MRP (per piece) |
|-------------|-----------|----------|------------------|-----------------|
| 2½ X 4 | 110 X 75 | 3087315 | 32 | 86 |

**Reducer Y**

| Size (inch) | Size (mm) | SAP Code | Std. Pkg. (Nos.) | MRP (per piece) |
|-------------|-----------|----------|------------------|-----------------|
| 2½ X 4 | 110 X 75 | 3087877 | 17 | 236 |

**Reducer Y with Door**

| Size (inch) | Size (mm) | SAP Code | Std. Pkg. (Nos.) | MRP (per piece) |
|-------------|-----------|----------|------------------|-----------------|
| 2½ X 4 | 110 X 75 | 3087878 | 14 | 292 |

**Door Cap**

| Size (inch) | Size (mm) | SAP Code | Std. Pkg. (Nos.) | MRP (per piece) |
|-------------|-----------|----------|------------------|-----------------|
| 2½ | 75 | 3087185 | 75 | 75 |
| 3 | 90 | * | * | * |
| 4 | 110 | 3087187 | 36 | 36 |
| 6 | 160 | * | * | * |

**Vent Cowl**

| Size (inch) | Size (mm) | SAP Code | Std. Pkg. (Nos.) | MRP (per piece) |
|-------------|-----------|----------|------------------|-----------------|
| 2½ | 75 | 3087190 | 162 | 29 |
| 3 | 90 | * | * | * |
| 4 | 110 | 3087194 | 72 | 49 |
| 6 | 160 | * | * | * |

**Nahani Trap with Jaali**

| Size (inch) | Size (mm) | SAP Code | Std. Pkg. (Nos.) | MRP (per piece) |
|-------------|-----------|----------|------------------|-----------------|
| 2½ X 4 | 110 X 75 | 3087197 | 19 | 159 |

**Nahani Trap without Round Jaali**

| Size (inch) | Size (mm) | SAP Code | Std. Pkg. (Nos.) | MRP (per piece) |
|-------------|-----------|----------|------------------|-----------------|
| 2½ X 4 | 110 X 75 | 3087201 | 19 | 139 |

**Round Jaali**

| Size (inch) | Size (mm) | SAP Code | Std. Pkg. (Nos.) | MRP (per piece) |
|-------------|-----------|----------|------------------|-----------------|
| 2½ | 75 X 75 | * | * | * |
| 3 | 90 X 75 | * | * | * |
| 4 | 110 X 75 | 3087206 | 168 | 20 |
| 6 | 160 X 75 | * | * | * |

**Pipe Clip**

| Size (inch) | Size (mm) | SAP Code | Std. Pkg. (Nos.) | MRP (per piece) |
|-------------|-----------|----------|------------------|-----------------|
| 2½ | 75 | 3087211 | 175 | * |
| 3 | 90 | * | * | * |
| 4 | 110 | 3087216 | 100 | 31 |
| 6 | 160 | * | * | * |

**Multi Floor Trap Body without Cover & Jaali**

| Size (inch) | Size (mm) | SAP Code | Std. Pkg. (Nos.) | MRP (per piece) |
|-------------|-----------|----------|------------------|-----------------|
| 2½ | 75 X 75 | * | * | * |
| 3 | 90 X 75 | * | * | * |
| 4 | 110 X 75 | 3087236 | 24 | 195 |
| 6 | 160 X 75 | * | * | * |

**Multi Floor Trap Body with Cover & Jaali**

| Size (inch) | Size (mm) | SAP Code | Std. Pkg. (Nos.) | MRP (per piece) |
|-------------|---------------|----------|------------------|-----------------|
| 2½ | 75 X 75 X 50 | * | * | * |
| 3 | 90 X 75 X 50 | * | * | * |
| 4 | 110 X 75 X 50 | 3087255 | 24 | 205 |
| 6 | 160 X 75 X 50 | * | * | * |

**P Trap (Plain Socket)**

| Size (inch) | Size (mm) | SAP Code | Std. Pkg. (Nos.) | MRP (per piece) |
|-------------|-----------|----------|------------------|-----------------|
| 4 X 4 | 110 X 110 | 3087262 | 12 | 388 |

**S Trap (Plain Socket)**

| Size (inch) | Size (mm) | SAP Code | Std. Pkg. (Nos.) | MRP (per piece) |
|-------------|-----------|----------|------------------|-----------------|
| 4 X 4 | 110 X 110 | 3087270 | 10 | 588 |

**Co Molded Rubber Seal**

| Size (inch) | Size (mm) | SAP Code | MRP (per piece) |
|-------------|-----------|----------|-----------------|
| 2½ | 75 | 3087388 | 12 |
| 3 | 90 | 3087396 | 16 |
| 4 | 110 | 3087405 | 16 |
| 6 | 160 | 3087414 | 40 |

**Lubricant**

| Size (ML) | SAP Code | Std. Pkg. (Nos.) | MRP (per piece) |
|-----------|----------|------------------|-----------------|
| 100 ML | 3087347 | 100 | 20 |
| 250 ML | 3087352 | 40 | 44 |

**Solvent Cement**

| Size (ML) | SAP Code | Std. Pkg. (Nos.) | MRP (per piece) |
|-----------|----------|------------------|-----------------|
| 100 ML | 3087363 | 144 | 66 |
| 250 ML | 3087372 | 96 | 124 |

Agri Pipes & Fittings

Wavin Agri pipes are as per IS 4985 standards
& Agri fittings are as per IS 7834 standards.

Class - 2 (4kg), 3 mtr. Selfit

| Size (inch) | Size (mm) | SAP Code | MRP (per length) |
|-------------|-----------|----------|------------------|
| 2 | 63 | 3087529 | 410 |
| 2½ | 75 | 3087559 | 578 |
| 3 | 90 | 3087576 | 796 |
| 4 | 110 | 3087595 | 1132 |
| 6 | 160 | 3087538 | 2513 |



Class - 2 (4kg), 6 mtr. Selfit

| Size (inch) | Size (mm) | SAP Code | MRP (per length) |
|-------------|-----------|----------|------------------|
| 2 | 63 | 3087518 | 818 |
| 2½ | 75 | 3087549 | 1156 |
| 3 | 90 | 3087567 | 1590 |
| 4 | 110 | 3087585 | 2264 |
| 6 | 160 | 3087327 | 5024 |



Class - 3 (6kg), 3 mtr. Selfit

| Size (inch) | Size (mm) | SAP Code | MRP (per length) |
|-------------|-----------|----------|------------------|
| 1¼ | 40 | 3087498 | 244 |
| 1½ | 50 | 3087510 | 370 |
| 2 | 63 | 3087535 | 596 |
| 2½ | 75 | 3087561 | 816 |
| 3 | 90 | 3087580 | 1162 |
| 4 | 110 | 3087220 | 1644 |
| 6 | 160 | 3087597 | 3572 |



Class - 3 (6kg), 6 mtr. Selfit

| Size (inch) | Size (mm) | SAP Code | MRP (per length) |
|-------------|-----------|----------|------------------|
| 1¼ | 40 | 3087491 | 488 |
| 1½ | 50 | 3087503 | 738 |
| 2 | 63 | 3087523 | 1192 |
| 2½ | 75 | 3087554 | 1632 |
| 3 | 90 | 3087572 | 2332 |
| 4 | 110 | 3087589 | 3308 |
| 6 | 160 | 3087437 | 7154 |



Elbow 90°

| Size (inch) | Size (mm) | SAP Code | MRP (per length) |
|-------------|-----------|----------|------------------|
| 1¼ | 40 | 3087317 | 30 |
| 1½ | 50 | 3087419 | 53 |
| 2 | 63 | 3087478 | 72 |
| 2½ | 75 | 3087542 | 82 |
| 3 | 90 | 3087591 | 145 |
| 4 | 110 | 3087599 | 210 |
| 5 | 140 | 3087601 | 418 |
| 6 | 160 | 3087481 | 636 |



Tee

| Size (inch) | Size (mm) | SAP Code | MRP (per length) |
|-------------|-----------|----------|------------------|
| 1¼ | 40 | 3087606 | 32 |
| 1½ | 50 | 3087609 | 78 |
| 2 | 63 | 3087326 | 78 |
| 2½ | 75 | 3087331 | 104 |
| 3 | 90 | 3087353 | 168 |
| 4 | 110 | 3087361 | 280 |
| 6 | 160 | * | * |



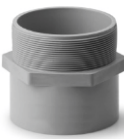
Reducing Tee

| Size (inch) | Size (mm) | SAP Code | MRP (per length) |
|-------------|-----------|----------|------------------|
| 2½ X 2 | 75 X 63 | 3087346 | 112 |
| 4 X 2 | 110 X 63 | 3087376 | * |
| 4 X 2½ | 110 X 75 | 3087387 | * |
| 4 X 3 | 110 X 90 | 3087396 | * |
| 6 X 4 | 160 X 110 | * | * |



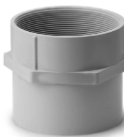
MTA

| Size (inch) | Size (mm) | SAP Code | MRP (per length) |
|-------------|-----------|----------|------------------|
| 2 | 63 | 3087406 | * |
| 2½ | 75 | 3087411 | * |
| 3 | 90 | 3087424 | * |
| 4 | 110 | * | * |



FTA

| Size (inch) | Size (mm) | SAP Code | MRP (per length) |
|-------------|-----------|----------|------------------|
| 2 | 63 | 3087428 | * |
| 2½ | 75 | * | * |
| 3 | 90 | * | * |
| 4 | 110 | * | * |



Reducing Bush

| Size (inch) | Size (mm) | SAP Code | MRP (per length) |
|-------------|-----------|----------|------------------|
| 1½ X 1¼ | 50 X 40 | * | * |
| 2 X 1½ | 63 X 50 | * | * |
| 2½ X 2 | 75 X 63 | 3087434 | * |
| 3 X 2 | 90 X 63 | 3087438 | * |
| 3 X 2½ | 90 X 75 | 3087445 | * |
| 4 X 2 | 110 X 63 | 3087449 | * |
| 4 X 2½ | 110 X 75 | 3087452 | * |
| 4 X 3 | 110 X 90 | 3087459 | * |
| 6 X 4 | 160 X 110 | * | * |





Reducing Coupler

| Size (inch) | Size (mm) | SAP Code | MRP (per length) |
|-------------|-----------|----------|------------------|
| 2 X 1¼ | 63 X 40 | * | * |
| 2 X 1½ | 63 X 50 | 3087489 | * |
| 4 X 1½ | 110 X 75 | * | * |
| 4 X 2 | 110 X 63 | * | * |



Solvent Cement

| Size (inch) | SAP Code | MRP (per length) |
|-------------|----------|------------------|
| 100 ML | 3087462 | 70 |
| 250 ML | 3087470 | 135 |
| 500 ML | * | * |
| 1 Ltr | * | * |
| 5 Ltr | * | * |



Reducing Elbow

| Size (inch) | Size (mm) | SAP Code | MRP (per length) |
|-------------|-----------|----------|------------------|
| 3 X 2 | 90 X 63 | * | * |
| 4 X 3 | 110 X 90 | * | * |
| 6 X 4 | 160 X 110 | * | * |



Class - 1 (2.5kg), 3 mtr. Selfit

| Size (inch) | Size (mm) | SAP Code | MRP (per length) |
|-------------|-----------|----------|------------------|
| 3 | 90 | * | * |
| 4 | 110 | * | * |
| 6 | 160 | * | * |



Class - 1 (2.5kg), 6 mtr. Selfit

| Size (inch) | Size (mm) | SAP Code | MRP (per length) |
|-------------|-----------|----------|------------------|
| 3 | 90 | * | * |
| 4 | 110 | * | * |
| 6 | 160 | * | * |



Coupler

| Size (inch) | Size (mm) | SAP Code | MRP (per length) |
|-------------|-----------|----------|------------------|
| 2 | 63 | * | * |
| 2½ | 75 | * | * |
| 3 | 90 | * | * |
| 4 | 110 | * | * |
| 6 | 160 | * | * |



End Cap

| Size (inch) | Size (mm) | SAP Code | MRP (per length) |
|-------------|-----------|----------|------------------|
| 2 | 63 | * | * |
| 2½ | 75 | * | * |
| 3 | 90 | * | * |
| 4 | 110 | * | * |



Our innovative plumbing and drainage systems

AS Low-noise System



Innovative low-noise and waste management system



Extremely robust and high-resistant to corrosion



Easy installation with rubber-lined metal brackets

SITECH+ Pipes & Fittings



Mineral reinforced polypropylene soil & waste system



Ensures improved acoustic comfort during water-flow



The new black colour adds durability and robustness

TIGRIS K1 Press-fit System



Perfect for potable, sanitary & heating applications



Defined leak function to reveal unpressed fittings



High resistance to variation in pressure & temperature

HEP₂O Push-fit System



High flexibility for easier, quicker & secure installation



Extremely easy to demount with the new Hepkey system



Innovatively designed with in4sure™ joint recognition

HEP_vO Sanitary Solution



Vertical or horizontal installation possible ensuring flexibility



Permanent odour protection for any water flow application



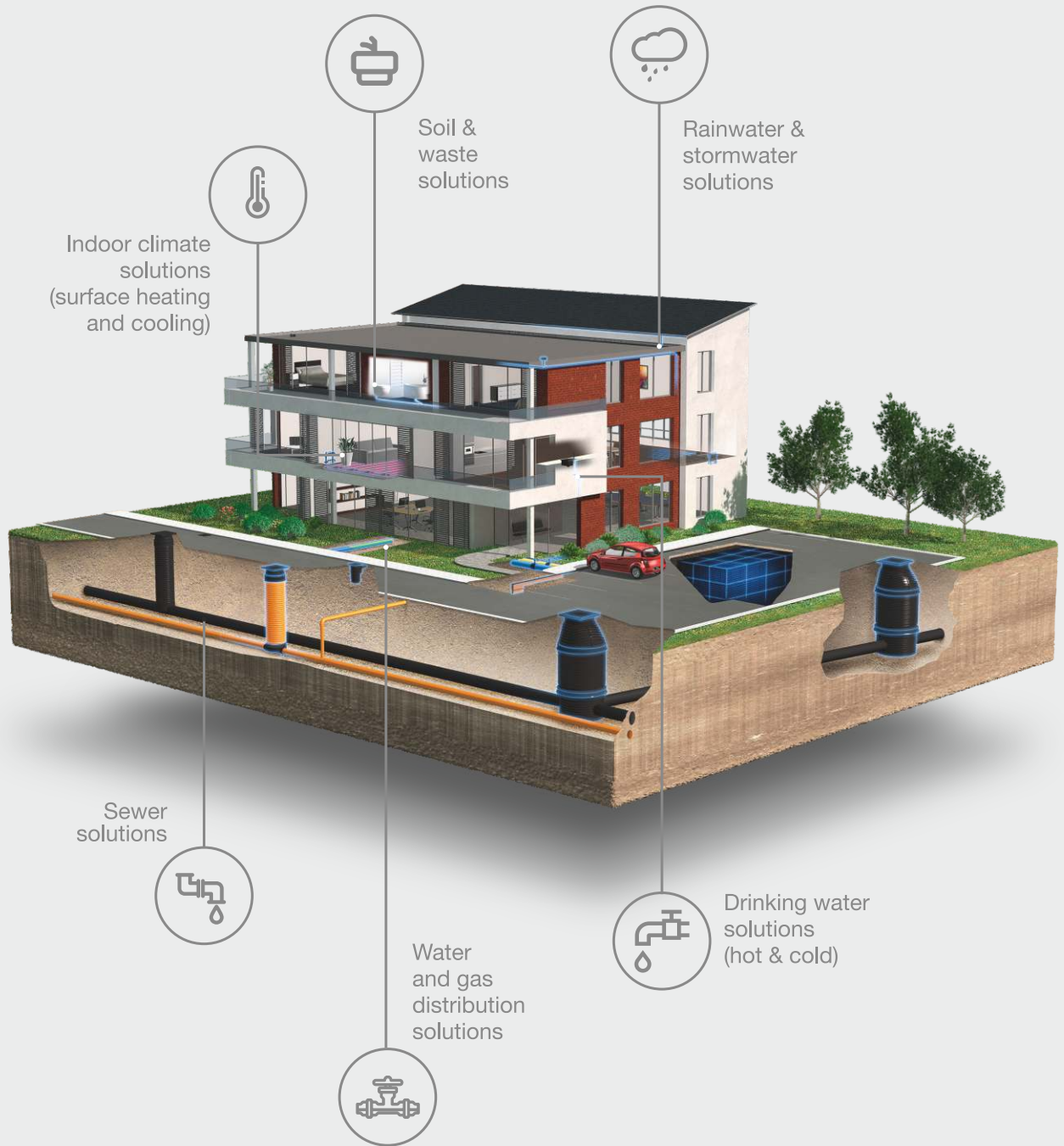
One of the world's bestselling waterless trap sanitary solution

Discover our broad portfolio at wavin.com

Hot & Cold Water
Indoor Climate
Soil & Waste

Foul Water
Storm Water

Gas & Water Mains
Geotextiles



Wavin is part of Orbia, a community of companies working together to tackle some of the world's most complex challenges. We are bound by a common purpose: To Advance Life Around the World.

WAVIN INDIA E-mail wavinindia@wavin.com | Internet www.wavin.co.in
Toll free number: 1800-123-7704



© 2020 Wavin Wavin reserves the right to make alterations without prior notice. Due to continuous product development, changes in technical specifications may change. Installation must comply with the installation instructions.